



## FOR LEASE: EXECUTIVE PACIFIC RETAIL SPACE

410 Spring St, Seattle WA | \$32/SQFT/Year | 1,080 SQFT

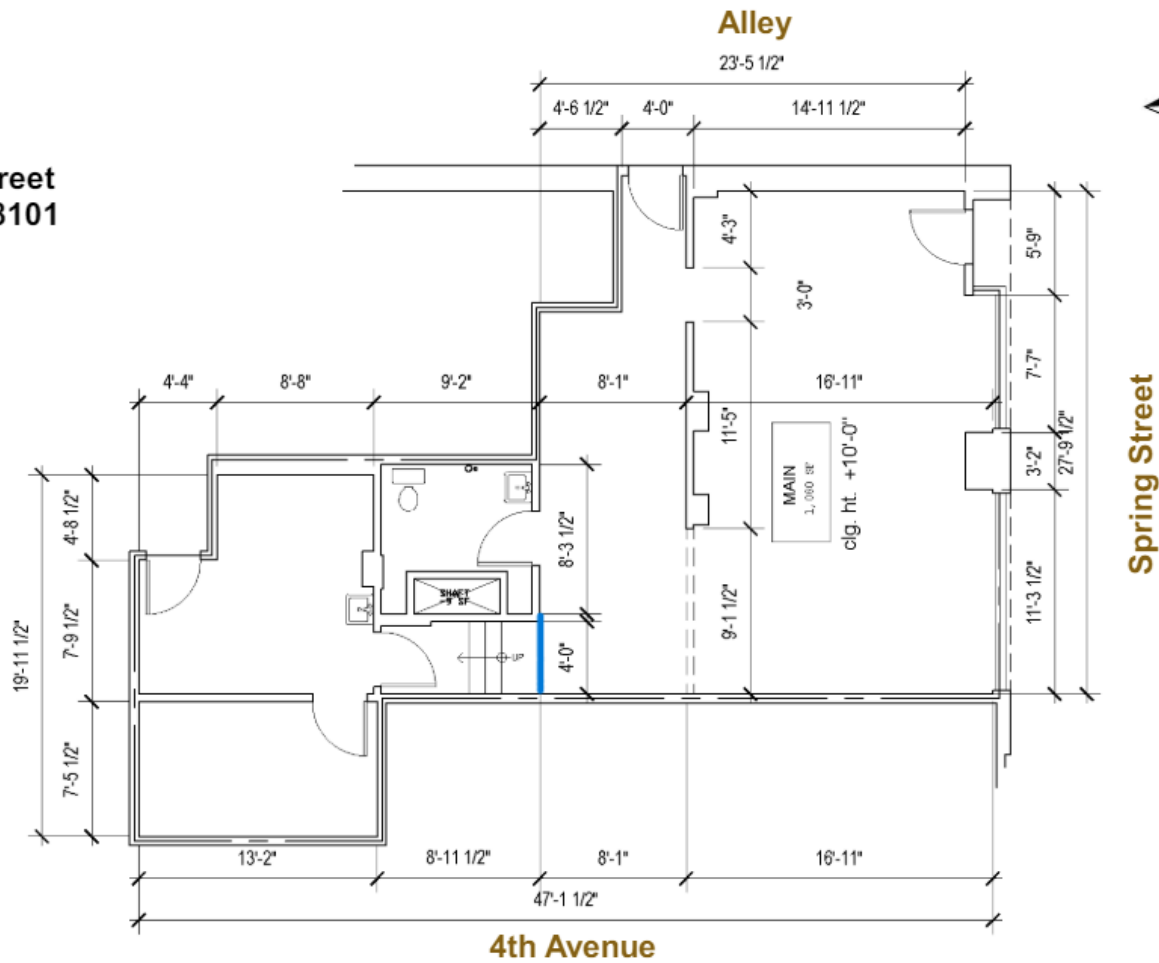
775 to 1,080 Square Feet of Streetfront retail along Spring Street. Shell space positioned for immediate build-out to suit needs. 156 Hotel rooms provide daily customer business located next to the lobby of the Executive Pacific Hotel.





**AVAILABLE**  
**1,080 SF**

**410 Spring Street**  
**Seattle, WA 98101**



**MITCH BATTISON**  
206.812.9137  
Mitch@paragonREA.com



**PARAGON**  
REAL ESTATE ADVISORS

600 University St, Suite 2018 | Seattle, WA 98101

Information within this marketing package has been secured from sources we believe to be reliable, but we make no representations or warranties, expressed or implied, as to the accuracy of the information. References to square footage or age are approximate. Buyer must verify all information and bears all risk for inaccuracies.